

Dec 2025



salinasvalleyartassociation.com

PO Box 4823, Salinas CA 93912

Presidents Corner

Hello SVAA members,

Hope you all had a great Thanksgiving and are looking forward to Christmas and the fun of



gathering again with family and friends. See the "Next Event" portion of this issue for our own special plans.

Meanwhile, don't let the winter blues visit you with colder weather and short days. Painting can lift your spirits but did you know adding a green plant to your indoor environment can too. It not only helps your mental health but physical health too. Plants purify the air and increase oxygen levels. And, our mood and creativity are boosted.

Here are four that are beneficial:

RUBBER PLANT

JADE PLANT

POTHOS

MONSTERA DELICIOSA

(Californian article "Houseplants can lessen winter blues").

You are an important part of the Salinas Valley Art Association! We miss you when you don't attend! Let's make 2026 a year for growth with old and new friends.

Next Event

Tuesday, December 9th is one of those special days to gather with other artists for our Annual Christmas potluck at Harden Foundation. Bring your favorite salad, main dish, Hors d'oeuvres, sparkling cider etc.

Plan to arrive on Tuesday, Dec. 9th. Setup starts at 11:00. There will be no Saturday meeting in December, just the yummy potluck.

Bring one of your art pieces to be judged by all. Prizes will be awarded for 1st, 2nd and 3rd place.

Don't forget the easel to display it on.

We will have lots of fun sharing our best painting.



Our usual monthly Harden art events will be Tuesdays, in December 2, 9, 16 & 23 (only).

Happy Birthday



Jewel Maisonneuve 12/15

Victoria Lee 12/26

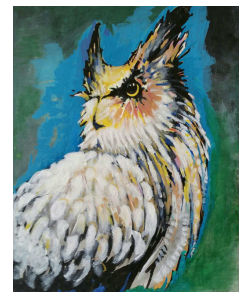
Linda Griffith 12/28

Member's Gallery



Mary Garza:

Buffalo



Lawrence Harris:

Piercing Gaze

Now Hanging



GOLDEN BEAR PHYSICAL THERAPY people are very happy to still have paintings by Carol Dixon, Mary Garza, Linda Griffith and John Ramirez hanging until the end of this year.

SVAA Board Members

President:	Donna Davenport
V.P./Communications	Lawrence Harris
Treasurer:	Sue Shaw
Secretary	Gail Lawrence
Website & Demo Videos	Steve Maher
Roster	Pat Maher

To enlarge Newsletters images:

Window desktop & Laptop users:

Zoom in and out by using the + and – pads located at the lower right side of the pdf window



Use your keyboard arrows to move around the page.

Apple users and Cell phones: Zoom in and out of images by spreading or closing two finders on the glass.
